



Leader in Passenger Transportation Solutions

# Info Zone



## AUTOBUS THOMAS IS NOW AN AUTHORIZED REV Group distributor



We've added a new banner to our commercial vehicle line

### AUTOBUS THOMAS PARTNERS WITH THE BEST IN THE INDUSTRY.

In addition to offering a wide range of top-quality school buses, Autobus Thomas is proud to announce the signing of a major commercial vehicle agreement: **we are now the authorized REV Group distributor for Eastern Canada.**

To support sales of this new vehicle line, Autobus Thomas will also provide maintenance and parts service. Refer to page 2 for details.

## PIERRE BRODEUR RETIRES AFTER 36 YEARS OF LOYAL SERVICE

### Pierre Brodeur: professionalism, courtesy and class personified!

After helping to build a winning team, as much for clients as for the company, it is now time for Pierre to enjoy a well-deserved retirement.

We are honoured to have worked side-by-side with this incredibly dedicated person for so many years.



Bernard Dubé, President and Pierre Brodeur, Sales Representative

*Best wishes for a happy, active retirement!*

## APPOINTMENTS

Mr. Bernard Dubé, President of Autobus Thomas, is happy to announce the appointment of **Ms. Véronique Dubé, CA, CPA, to the position of Vice President of Operations.** This announcement is part of a family succession process that is currently underway at the company.

Likewise, **Mr. Éric Couturier has been named Vice President of Sales and Business Development.** For the last five years, Éric has contributed to company growth through his forward-thinking vision, great determination and tireless work ethic. Autobus Thomas management can count on leaders like Éric in order to establish its position as a **Leader in Passenger Transportation Solutions.**

## CUSTOMER APPRECIATION FOR STÉPHANE PAQUIN, OUR SALES REPRESENTATIVE

We always welcome client comments, especially when they are as positive as this! As such, we would like to commend Stéphane for his excellent work and professionalism, which promotes our company outside of Quebec.

« Dear Mr. Bernard Dube:

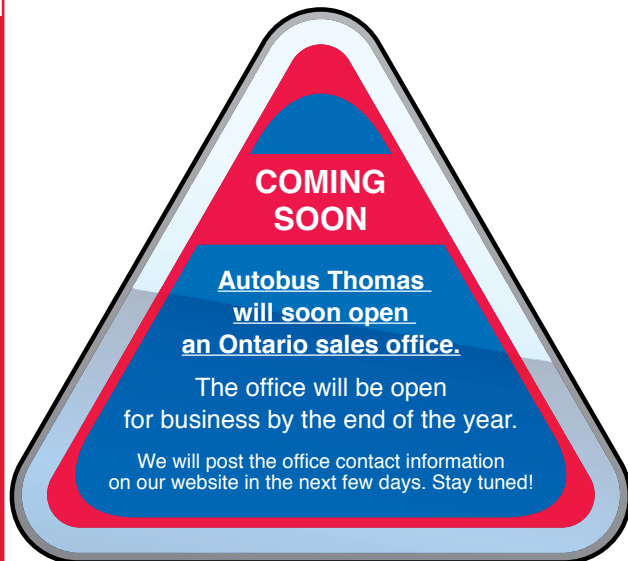
*I am Omar Abdulle, The Financial Consultant of Ottawa Islamic School, We are very delighted with our new bus purchased from your company.*

*We have been deeply touched by the support and service that Mr. Stephan Paquin (Territory Manager) had provided to us. He is an amazing person to deal with from start to the end of finalizing the purchase of the bus and he is continuing the support even after the purchase which showed us that we are in good hands and it also showed how great your company is to have such person.»*

*Thank you very much*

**Omar Abdulle**

*Financial Consultant - Ottawa Islamic School*



# COMMERCIAL VEHICLES FROM AUTOBUS THOMAS, NOW EVEN MORE POSSIBILITIES

As mentioned on the first page, following our deal with REV Group, we now offer the largest selection of commercial vehicles in Eastern Canada.



**REV Group** is comprised of 16 factories located primarily in Michigan, Kansas and California (USA).

It is 4 million square feet where 6,000 employees manufacture 20,000 vehicles annually.

REV Group features 26 brands including 9 commercial bus and mini-van lines. As a result of this agreement, which is only the beginning, Autobus Thomas now offers vehicles the likes of **Krystal Coach, Eldorado Mobility, Collins Transit, Federal Coach and World Trans,** just to name a few.

Starting now, our service department offers complete support for these products, including a comprehensive parts inventory for our expanded line of vehicles.

When we talk about commitment, here's the proof: we've done everything possible to offer the best products with service and parts availability that you would expect from **Eastern Canada's Leader in Passenger Transportation Solutions.**



# WORKSHOP NEWS

## RENEWAL OF OUR PLATINUM SUPPORT CERTIFICATION



We were the first Thomas Built Buses dealer to receive PLATINUM SUPPORT CERTIFICATION last year.

However, nothing is taken for granted and the manufacturer performs an annual audit to ensure that those certified continue to improve and meet program requirements in every way, year after year. We have just successfully passed the audit and will receive our certification renewal in November. Thank you to our entire team!

## OUR MOBILE UNIT TRAVELLED OVER 8,000 KM THIS SUMMER

From Mont-Laurier to the North end of Montreal to Lac-Saint-Jean to La Tuque and even throughout the Quebec City region.

Numerous clients saved both time and money thanks to our mobile unit. Still on the road, it will travel to the Gaspé and the Lower Saint Lawrence regions this fall.

Contact your service department to schedule your next visit.

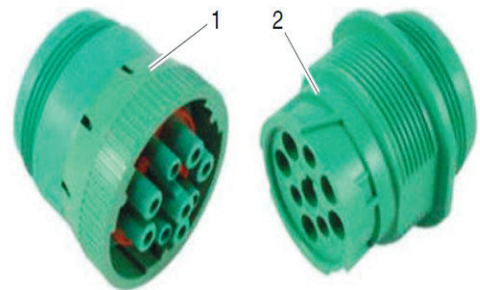


## EVOLVING TECHNOLOGY FOR BETTER SERVICE

Technological changes bring solutions to optimize communication with new Thomas vehicles.

This connection helps us to quickly detect problems and find solutions.

Please consult the "Service" section of our website to view the relevant service bulletin.



05/04/2015

f546196

1. Diagnostic Connector
2. Vehicle Receptacle

## A RECENT DELIVERY!



We just recently delivered this commercial vehicle to the City of Montreal: **A BEAUTIFUL C2** that will soon roll through the streets of our city. Congratulations!

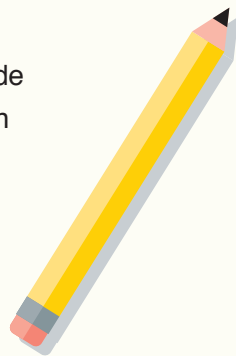
## WE MUST ADAPT!

The drop in school bus sales is really hitting us hard!



If you've got something to share,  
**LET US KNOW** Via your representative  
or contact us directly.

We'll be happy to include  
your news in our written  
communications  
and on the website.



## A BEAUTIFUL RESTORATION IN PROGRESS

We would like to highlight the beautiful restoration work done by Autobus Laval on a 1950s Prevost.

*When the passion for bus transportation outshines day-to-day work.*

